

# CFM-PoE08

CFM Module with PoE Function, Individual Port 25.5W



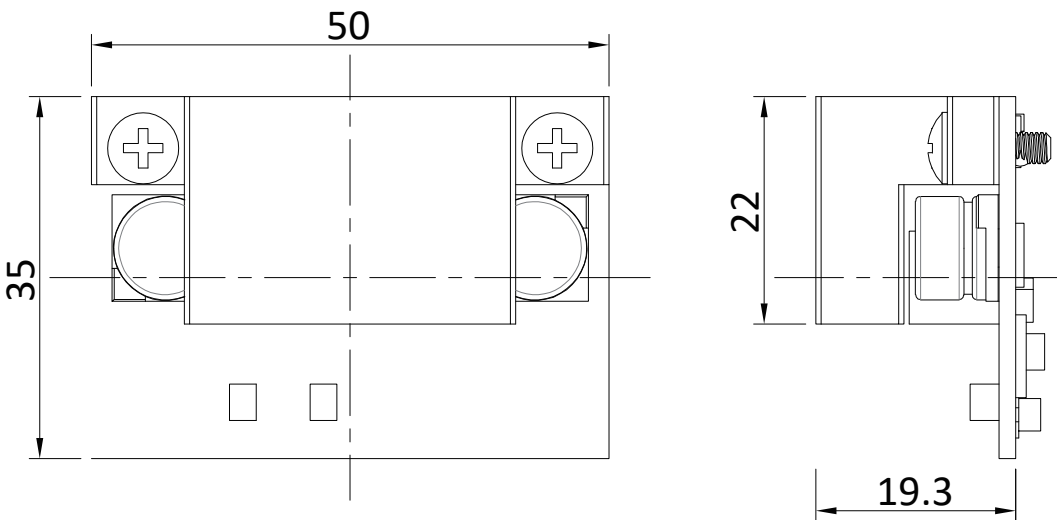
- CFM (Control Function Module) Technology
- Enable Power Over Ethernet Plus Function for CMI Module
- IEEE 802.3at Compliant
- Individual Port Support Up to 25.5W



## Specifications

Interface	▪ CFM (Control Function Module) Interface
Function	▪ 2x Power over Ethernet Plus Ports ( PoE+ )
Power over Ethernet Standard	▪ IEEE 802.3at Compliant
Power Output	▪ Individual port 25.5W
Power Boost	▪ 50 ~ 57V
Dimension ( W x D x H )	▪ 50 x 35 x 19.3 mm (With Heatsink)

## Dimensions



Unit: mm

## Ordering Information

### Available Models

Model No.	Description
CFM-PoE08-R10	CFM Module with PoE Function, Individual Port 25.5W

### Package Checklist

▪ Control Function Module x1	▪ Heatsink x1
▪ Thermal Pad Pack x1	▪ Screw Pack x1

## Compatible List

Product Series	Product Model
P2000 Series	P2302