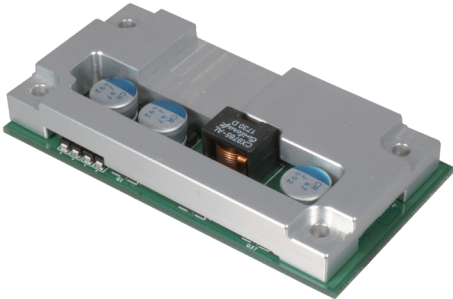
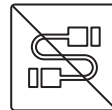
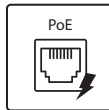


CFM-PoE06

CFM Module with PoE Control Function, Individual Port 25.5W



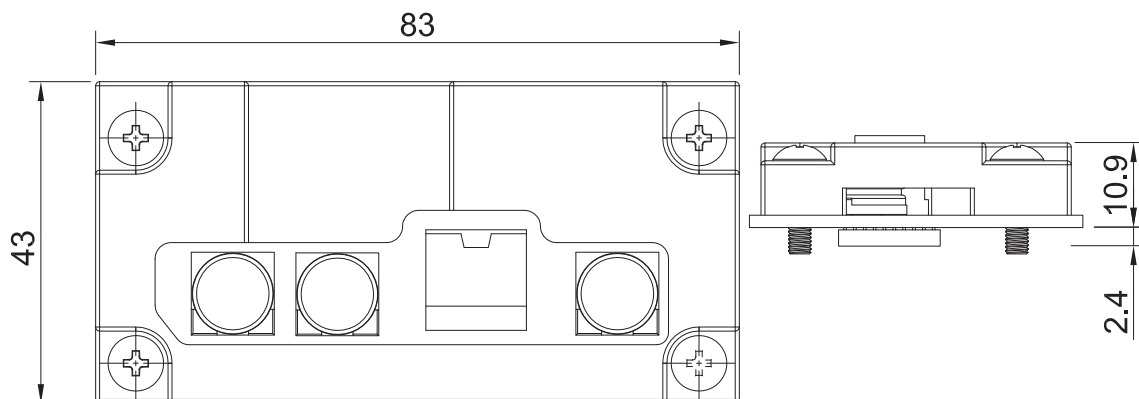
- CFM (Control Function Module) Technology
- Enable Power Over Ethernet Plus Function for CMI Module
- IEEE 802.3at Compliant
- Individual Port Support Up to 25.5W



Specifications

Interface	▪ CFM (Control Function Module) Interface
Function	▪ 4x Power over Ethernet Plus Ports (PoE+)
Power over Ethernet Standard	▪ IEEE 802.3at Compliant
Power Output	▪ Individual port 25.5W
Power Boost	▪ 50 ~ 57V
Dimension(W x D x H)	▪ 83 x 43 x 10.9 mm (With Heatsink)

Dimensions



Unit: mm

Ordering Information

Available Models

Model No.	Description
CFM-PoE06-R10	CFM Module with PoE Control Function, Individual Port 25.5W

Package Checklist

• Control Function Module x1	• PoE Heatsink x1
• PoE Thermal Pad Pack x1	• Screw Pack x1

Compatible List

Product Series	Product Model
DI Series	DI-1100 DI-1200