

# CFM-PoE05

CFM Module with PoE Function, Individual Port 25.5W



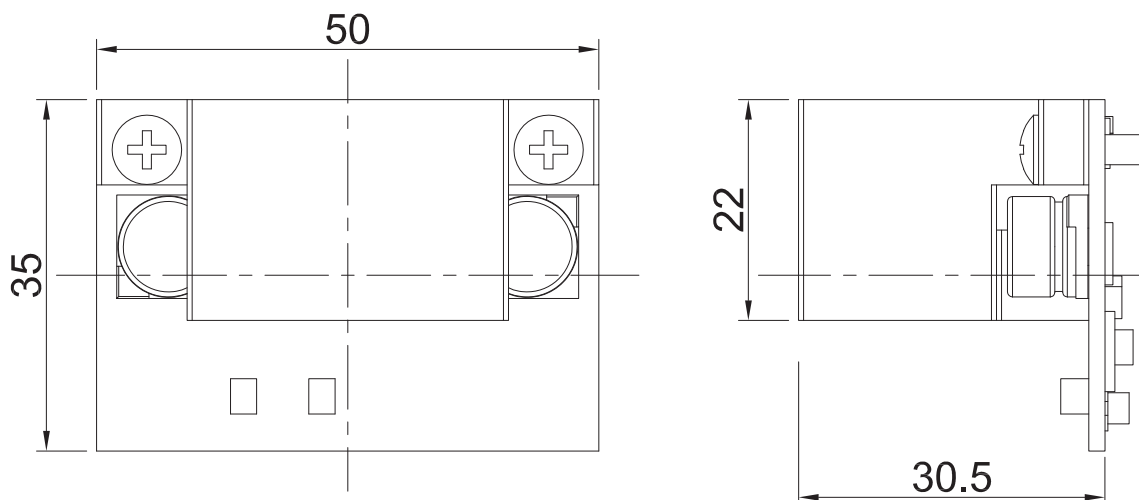
- CFM (Control Function Module) Technology
- Enable Power Over Ethernet Plus Function for LAN port
- IEEE 802.3at Compliant
- Individual Port Support Up to 25.5W



## Specifications

Interface	• CFM (Control Function Module) Interface
Function	• 2x Power over Ethernet Plus Ports ( PoE+ )
Power over Ethernet Standard	• IEEE 802.3at Compliant
Power Output	• Individual port 25.5W
Power Boost	• 50 ~ 57V
Dimension( W x D x H )	• 50 x 35 x 30.5 mm (With Heatsink)

## Dimensions



Unit: mm

## Ordering Information

### Available Models

Model No.	Description
CFM-PoE05-R11	CFM Module with PoE Control Function, Individual Port 25.5W

### Package Checklist

• Control Function Module x1	• Heatsink x1
• Thermal Pad Pack x1	• Screw Pack x1

## Compatible List

Product Series	Product Model
P2000 Series	P2202E P2102E