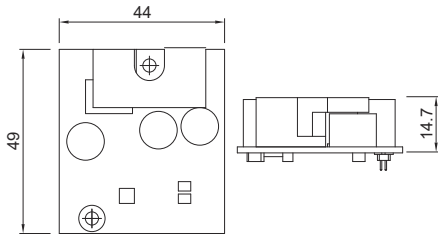


CFM PoE Module

CFM-PoE100

PoE Control Function Module,
Power Boost 50-57V

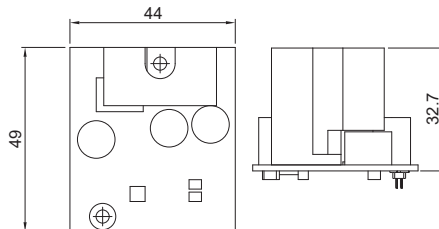
- CFM Interface
- IEEE 802.3at compliant
- Power Boost 50-57V
- Dimension (WxDxH) : 44 x 49 x 14.7 mm



CFM-PoE101

PoE Control Function Module,
Power Boost 50-57V

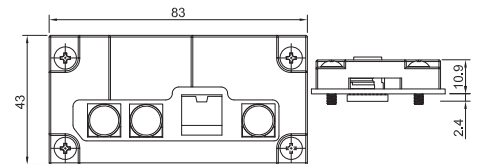
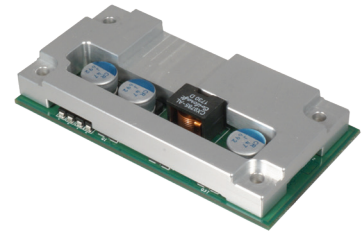
- CFM Interface
- IEEE 802.3at compliant
- Power Boost 50-57V
- Dimension (WxDxH) : 44 x 49 x 32.7 mm



CFM-PoE01

PoE Control Function Module,
Power Boost 50-57V

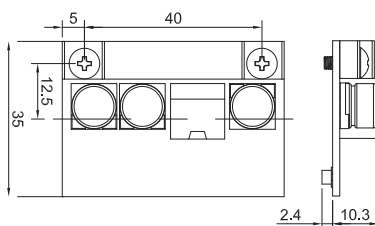
- CFM Interface
- IEEE 802.3at compliant
- Power Boost 50-57V
- Dimension (WxDxH) : 83 x 43 x 10.9 mm



CFM-PoE02

PoE Control Function Module,
Power Boost 50-57V

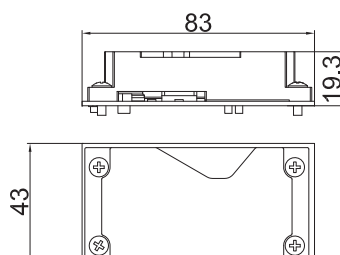
- CFM Interface
- IEEE 802.3at compliant
- Power Boost 50-57V
- Dimension (WxDxH) : 40 x 35 x 10.3 mm



CFM-PoE03

PoE Control Function Module,
Power Boost 50-57V

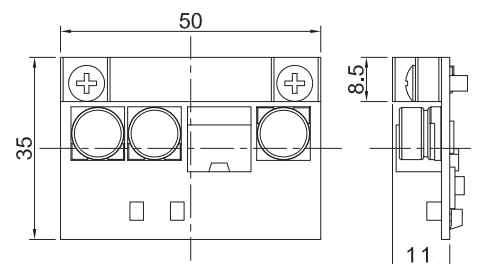
- CFM Interface
- IEEE 802.3at compliant
- Power Boost 50-57V
- Dimension (WxDxH) : 83 x 43 x 19.3 mm



CFM-PoE04

PoE Control Function Module,
Power Boost 50-57V

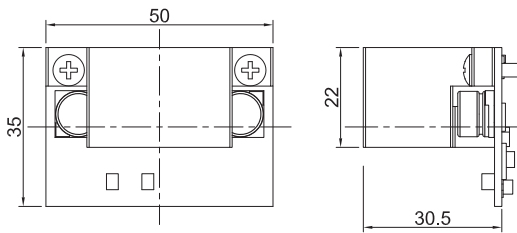
- CFM Interface
- IEEE 802.3at compliant
- Power Boost 50-57V
- Dimension (WxDxH) : 50 x 35 x 11 mm



CFM-PoE05

**PoE Control Function Module,
Power Boost 50-57V**

- CFM Interface
- IEEE 802.3at compliant
- Power Boost 50-57V
- Dimension (WxDxH) : 50 x 35 x 30.5 mm



Compatible List

| Model No. | CFM-PoE100 | CFM-PoE101 | CFM-PoE01 | CFM-PoE02 | CFM-PoE03 | CFM-PoE04 | CFM-PoE05 |
|----------------|------------|------------|-----------|-----------|-----------|-----------|-----------|
| P1101 | | | | V | | | |
| P1201 | | | | V | | | |
| P1301 | | | | V | | | |
| P2002 | V | | | | | | |
| P2002E | | V | | | | | |
| P2102 | | | | | | V | |
| P2102E | | | | | | | V |
| P2202 | | | | | | V | |
| P2202E | | | | | | | V |
| DA-1100 | | | | V | | | |
| DX-1000 | | | V | | | | |
| DX-1100 | | | V | | | | |
| DX-1200 | | | V | | | | |
| DS-1100 Series | | | | | V | | |
| DS-1200 Series | | | | | V | | |
| DS-1300 Series | | | | | V | | |
| DS-1400 Series | | | | | V | | |
| DC-1200 | | | | V | | | |
| GM-1000 | | | V | | | | |
| GP-3000 | | | V | | | | |

V : Compatible

Ordering Information

| Model No. | Description |
|------------|---|
| CFM-PoE100 | PoE Control Function Module, Individual port 25.5W |
| CFM-PoE101 | PoE Control Function Module, Individual port 25.5W |
| CFM-PoE01 | PoE Control Function Module, Individual port 25.5W |
| CFM-PoE02 | CFM Module with PoE Control Function, Individual Port 25.5W |
| CFM-PoE03 | CFM Module with PoE Control Function, Individual Port 25.5W |
| CFM-PoE04 | CFM Module with PoE Control Function, Individual Port 25.5W |
| CFM-PoE05 | CFM Module with PoE Control Function, Individual Port 25.5W |