

# Cincoze CFM PoE Module



**CFM-PoE100**

**PoE Control Function Module, Power Boost 44-57V**

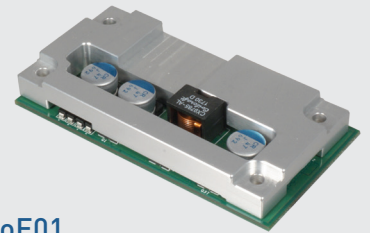
- CFM Interface
- IEEE 802.3at compliant
- Power Boost 44-57V
- Dimension (WxDxH) : 44 x 49 x 14.7 mm



**CFM-PoE101**

**PoE Control Function Module, Power Boost 44-57V**

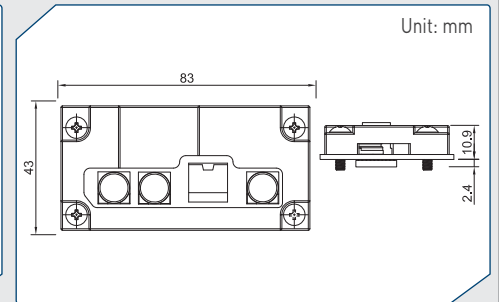
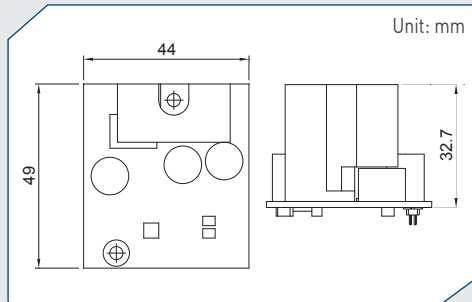
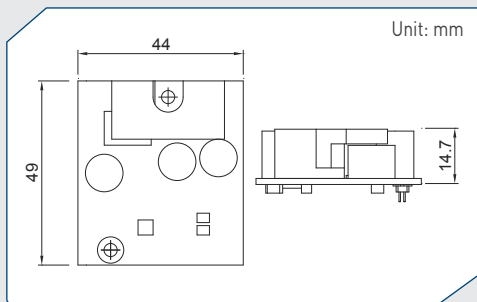
- CFM Interface
- IEEE 802.3at compliant
- Power Boost 44-57V
- Dimension (WxDxH) : 44 x 49 x 32.7 mm



**CFM-PoE01**

**PoE Control Function Module, Power Boost 44-57V**

- CFM Interface
- IEEE 802.3at compliant
- Power Boost 44-57V
- Dimension (WxDxH) : 83 x 43 x 10.9 mm



## CFM Module Compatible List

Model No.	CFM-PoE100	CFM-PoE101	CFM-PoE01
P2002	V		
P2002E		V	
DX-1000			V

V : Compatible

## Ordering Information

Model No.	Product Description
CFM-PoE100	PoE Control Function Module, Power Boost 44-57V (44 x 49 x 14.7 mm)
CFM-PoE101	PoE Control Function Module, Power Boost 44-57V (44 x 49 x 32.7 mm)
CFM-PoE01	PoE Control Function Module, Power Boost 44-57V (83 x 43 x 10.9 mm)